

HIGH VOLTAGE CLEARANCE

CUSTOMER OWNED PRIMARY LINES—Up to 50 kV

TREE TRIMMING RESPONSIBILITY—(Rule 75-326)

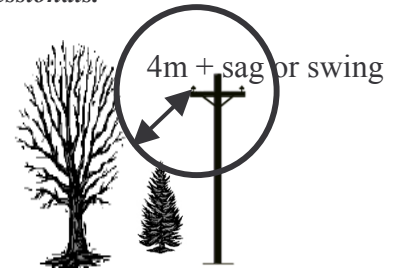
- 4m distance plus conductor sag or swing is required from primary lines, including the neutral conductor, to woody growth, or,
- Trimming by the owner to the requirements of the supply authority rule or by-law, or,
- ESA will also accept a statement from the supply authority or distributor confirming they have a program to trim trees on customer owned primary lines to their standard

CAUTION: *Life threatening hazards are present. If you decide to trim the trees yourself, arrange for a disconnection of the primary line. We strongly recommend that tree-trimming work be done by professionals.*

TREE CLEARANCES

Notes: *

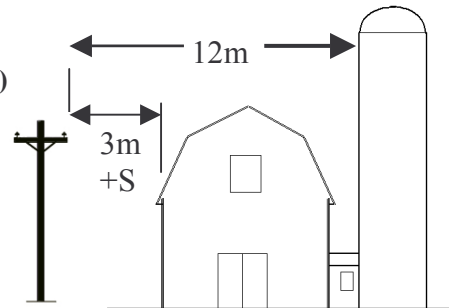
- A primary line is a distribution system and includes the primary neutral (Rule 75-310).
- The primary neutral is considered a secondary conductor for the purposes of ground clearance only, not for tree clearances. (Rule 75-310(3), 6-112(2)).



This regulation applies to all new and replacement primary lines/poles.

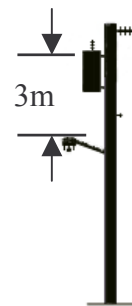
CLEARANCES TO OTHER STRUCTURES (Rule 75-312, 75-314, 75-602)

- Primary lines shall be kept at least 3m plus conductor swing, measured horizontal from a building.
- Primary lines shall not be installed closer than 12m to silos or like structures.
- Primary lines shall not be installed over or near wells from which well rods might contact the line.
- Shall be sufficiently clear of flagpoles and antennae so they will not contact the line should they fall.
- Shall not be located within 6m horizontally from wind mills or like structures.
- At maximum sag shall have at least 3.1m clearance above fences
- Privately owned pole mounted lights shall be kept at least 3m below the high voltage conductors



UTILITY OWNED PRIMARY LINES

- Minimum clearances as per the standards of the supply Authority having jurisdiction
- Prior to the start of work adjacent to any Utility owned primary line, please contact the Utility having jurisdiction



OTHER INFORMATION

- Occupational Health & Safety Act.
- Ontario Building Code
- CAN/CSA C22.3 No. 1-M87 (1997) Standard.

***If the conductor swing is unknown a horizontal clearance of 4.8 m is acceptable.**

FOR FURTHER INFORMATION ON HOW TO CONTACT YOUR LOCAL INSPECTOR
Call 1-877-ESA-SAFE(372-7233) or (www.esasafe.com)